

# ***Naïve Case 1***

---

**William R. Short, MD, MPH**

*Assistant Professor of Medicine*

Division of Infectious Diseases

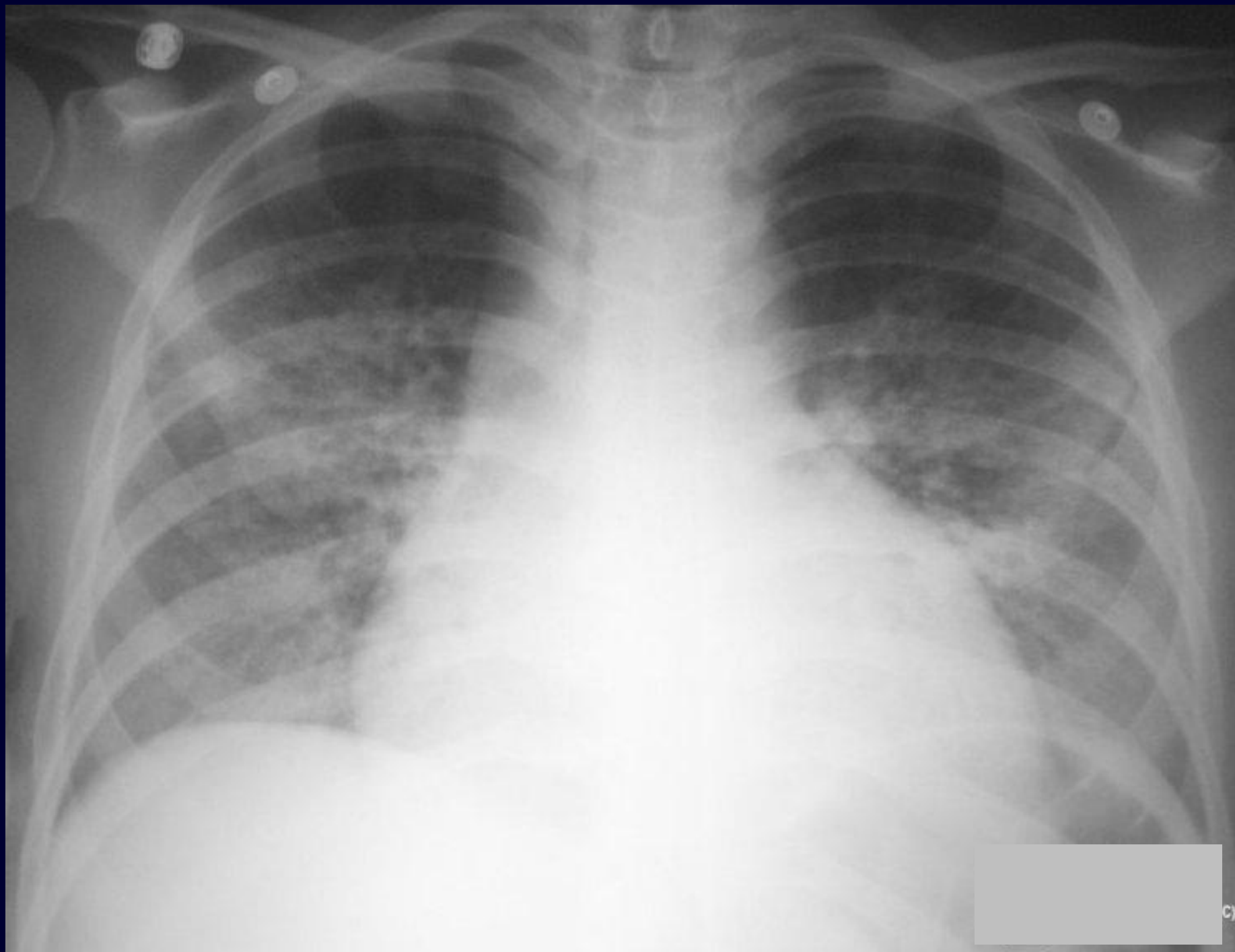
Jefferson Medical College of

Thomas Jefferson University

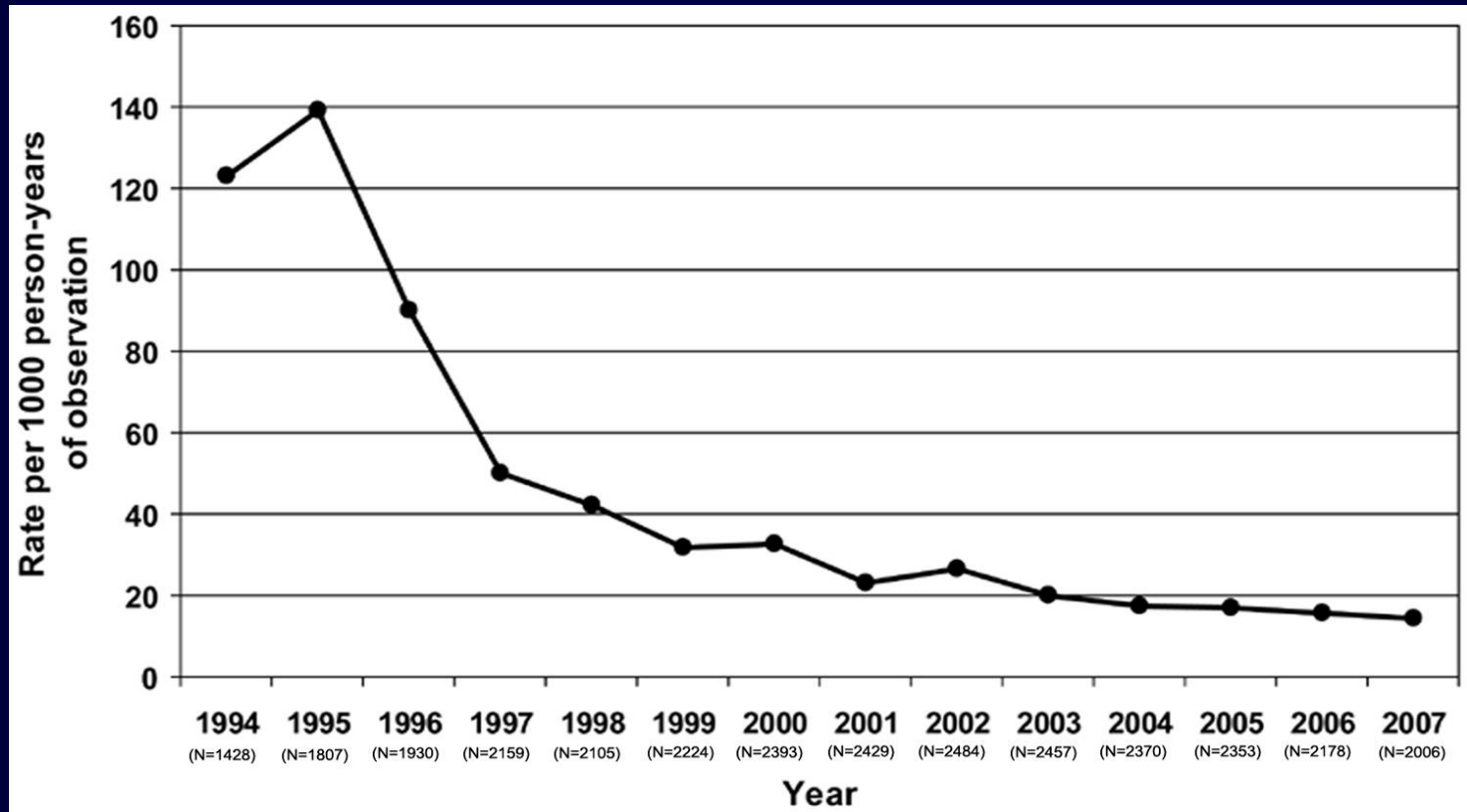
Philadelphia, Pa

# Case 1

- 42 year old white male newly diagnosed with HIV/AIDS presents with increasing SOB over 2-3 weeks. CD4 Count 80 cells/mm<sup>3</sup>
- His PaO<sub>2</sub> is 60mmHg on 2 liters of oxygen by nasal cannula
- He is currently taking no medication



ARS Question



**Figure 1. Incidences of first AIDS-defining opportunistic infection, according to year, among all patients in care, HIV Outpatient Study, 1994–2007 (Centers for Disease Control and Prevention, unpublished data; courtesy of R. Baker and K. Buchacz).**

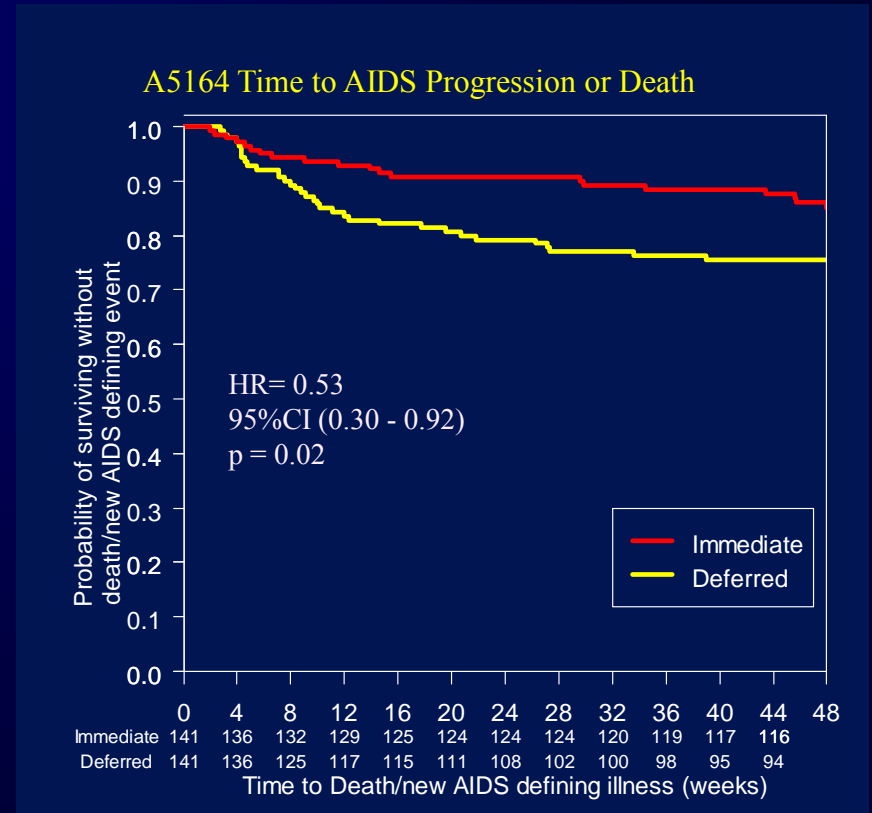
# Case Continued

- He is started on Trimethoprim/Sulfa and methylprednisolone
- You are covering the teaching service and the intern calls to ask if she should start the patient on HAART?

- ARS Question

# ACTG 5164: Immediate vs. Delayed ART with an Acute OI

- 228 pts with a treatable OI diagnosed within 14 days randomized to start ART within 48 hours vs. after 4 weeks
  - Most common OI: PCP (63%)
- AIDS progression/death: immediate rx (14%) vs. delayed rx (24%)
- No difference in safety/toxicity, IRIS, or week 48 responses



Zolopa CROI 2008, #142

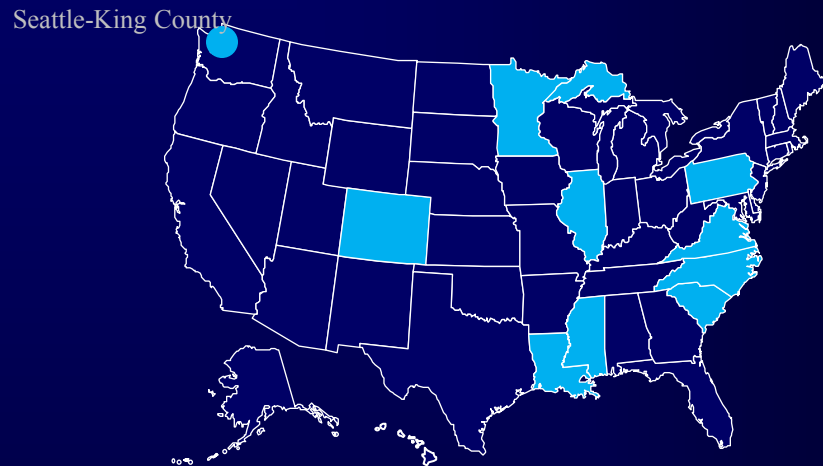


# ARS Question

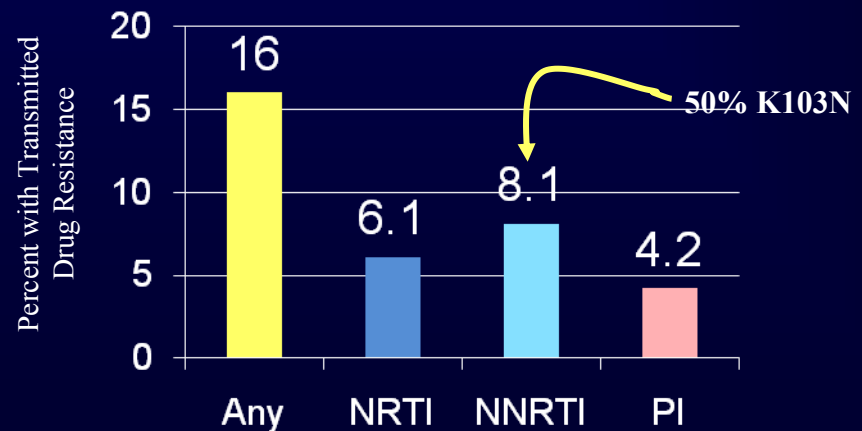
# Transmitted Drug Resistance in US: Newly Diagnosed

HIV TDR Surveillance Areas (2007)

- CDC surveillance for transmitted drug resistance in 2007
- Survey included 10,496 with new HIV Dx; 2,480 w/ genotype
- TDR present in significant number of patients with new HIV diagnosis
  - 83% with single mutation
  - NNRTI most common class with TDR
- No demographic risks factors identified



HIV TDR (2007)



A photograph of a sunset over the ocean. The sun is a bright yellow orb in the center of the frame, casting a long, shimmering path of light across the water's surface. The sky is a mix of orange and dark grey, with some clouds. The water is dark with white foam from waves. The text "Questions??" is written in a white, serif font across the middle of the image.

Questions??